



User Manual

C43000-02

A3S, AIR MOVER 3 SPEED, 240V

Minuteman®, Minuteman International, Inc.
A Member of the Hako Group

Technical Specifications

This manual is furnished with each new **Minuteman C43000-02**. This provides the necessary operating and preventive maintenance instructions. Operators must read and understand this manual before operating or servicing this machine.

This machine was designed to give you excellent performance and efficiency. For best results and minimal cost, please follow the general guidelines below:

- Operate the machine with reasonable care.
- Follow the manufacturer's suggested maintenance instructions as provided in this booklet.
- Use original Minuteman supplied parts.

Model: C43000-00

A3S, AIR MOVER 3 SPEED, 120V

Model Specifications

Power	230V / 50Hz
Motor	HP, 3 Speed, Sealed
Amps	7.6 / 8.5 / 9
Safety	ETL listed
Cord Length	15 ft.
Airflow	1600 CFM
Weight	32.5 lbs.
Dimensions	16.5 x 19.75 x 18.75 inches
Material	High Density Polyethylene Roto Mold

Table Of Contents

Technical Specifications	2
Table Of Contents	4
Safety Instructions	5
Unpacking Instructions.....	6
Operating Instructions.....	7
Parts	8
Troubleshooting	9
Warranty	10

FOR COMMERCIAL USE ONLY
IMPORTANT SAFETY INSTRUCTIONS
READ ALL INSTRUCTIONS BEFORE OPERATING EQUIPMENT

When using an electrical appliance, basic precautions should always be followed, including the following:

WARNING - To reduce the risk of fire, electric shock, or injury:

- Do not leave appliance when plugged in. Unplug from outlet when not in use and before servicing.

WARNING - To reduce the risk of electrical shock, do not expose to rain. Store indoors.

- Never allow children or untrained adults to operate this equipment.
- Keep the area of operation clear of all persons, particularly small children, and pets. Keep bystanders at least 25 feet away from the area of operation.
- Use only as described in this manual. Use only manufacturer's recommended attachments.
- Do not use with damaged cord or plug. If appliance is not working as it should, has been dropped, damaged, left outdoors, or dropped into water, return it to a service center.
- Do not pull or carry by cord, use cord as a handle, close a door on cord, or pull cord around sharp edges or corners.
- Do not run appliance over cord.
- Keep cord away from heated surfaces.
- Do not unplug by pulling on cord. To unplug, grasp the plug, not the cord.
- Do not handle plug or appliance with wet hands.
- Do not put any object into openings. Do not use with any opening blocked; keep free of dust, lint, hair, and anything that may reduce air flow.
- Keep hair, loose clothing, fingers, and all parts of body away from openings and moving parts.
- Do not pick up anything that is burning or smoking, such as cigarettes, matches, or hot ashes.
- Turn off all controls before unplugging.
- Use extra care when cleaning on stairs.
- Do not use to pick up flammable or combustible liquids such as gasoline or use in areas where they may be present.
- Connect to a properly grounded outlet only. See grounding instructions.
- If foam/liquid comes out of exhaust openings turn switch off immediately.
- Use only chemicals recommended by dealer/manufacturer.
- These machines must be used only with the power supply cord provided from the manufacturer:

SAVE THESE INSTRUCTIONS

Unpacking Instructions

INSPECTION

- Do not operate your air mover with a cut or frayed cord. Do not run power cord under carpeting. Do not cover power cord with rugs, runners, or similar covers. Place power cord away from traffic area to prevent tripping.
- Do not unplug your unit by pulling on its cord. Firmly grasp the plug and pull it out of the wall socket or power receptacle.
- The plug has a safety ground pin installed that must not be removed. If the pin is damaged or missing, replace the power cord before further use. Visually inspect the power cord before each use. Ignoring these safety precautions may result in a fire or electrical shock.
- Always use a GFCI outlet. Contact a qualified electrician for verification and/or installation of a GFCI receptacle if necessary.
- To reduce the risk of fire or electrical shock, do not use this fan with any after-market or solid-state speed control device.
- To prevent electric shock, do not operate the unit in standing water. Never plug in or unplug the unit with wet hands or while standing in water.
- Do not drop the unit. Sudden and severe impact may result in damage to internal components.
- Do not operate unit with the safety grills, existing covers, shields, or housing removed. Personal injury may result. Do not stick fingers or objects into the safety grills.
- To avoid injury, do not direct air flow at face or body. Do not allow children to play with or around unit at any time.
- Do not move or carry air mover while unit is operating.
- Drop cloths or other loose fabrics can be drawn against the unit thereby restricting airflow. This may cause the unit to overheat. Keep area around unit free and clear of any obstructions.
- Save the shipping carton in case your air mover needs to be returned.
- This unit should never be serviced or cleaned while it is plugged into a live electrical power source.
- Keep away from heat, chemicals, and other potential hazardous materials.
- Use equipment as instructed and with manufacturer's recommended accessories.
- Do not operate this equipment while impaired, distracted, or under the influence of alcohol, drugs, or medication.

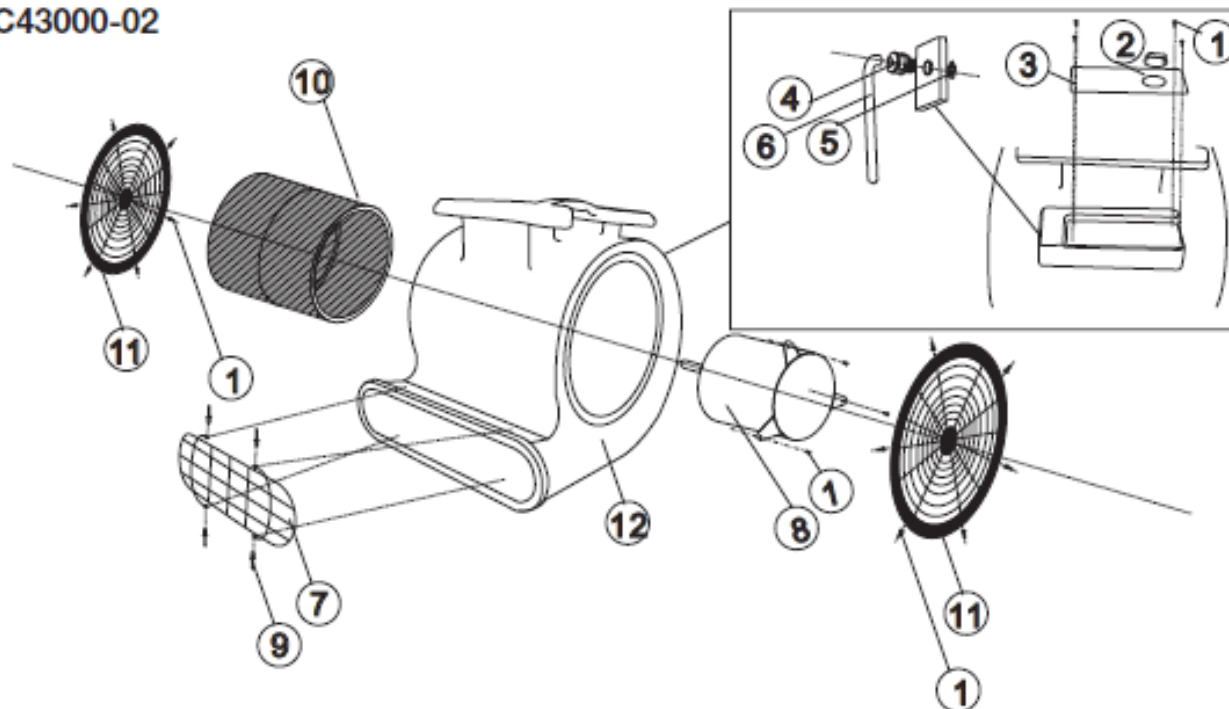
Operating Instructions

When operating the unit, please adhere to the following:

- Inspect unit upon receipt for any freight damages. Be sure to keep all original packaging if return process is required. If you discover any damages, please contact Minuteman International.
- Check the machine for any obstructions in the fan or airflow areas before plugging the unit in for operation.
- Set the machine in the desired orientation for operation.
- Ensure the switch is in the (OFF) position.
- Plug the power cord into a GFCI outlet.
- Do not use an extension cord.
- Do not use an adapter.
- Check GFCI protection by pushing “TEST” button. If operating properly, “RESET” button will pop out. Remember to press “RESET” button after testing to use machine.
- Do not plug more than a total of 12 amps into the GFCI outlet.
- Turn unit on
- When ‘daisy-chaining’ the machines, turn one unit on at a time to prevent excessive current flood from starting multiple units at one time.
- If red LED begins to flash, the unit has lost GFCI protection and should be replaced immediately.

Parts

C43000-02



ITEM #	PART NUMBER	DESCRIPTION	QTY	ITEM #	PART NUMBER	DESCRIPTION	QTY
1	APSFH	SCREWS	19	7	APGA100E	EXHAUST GRILL	1
2	APSR1HP-A	SWITCH ASSEMBLY	1	8	APMT-01-240V	MOTOR	1
3	APSPLATE-1HP	SWITCH PLATE	1	9	APRVT	RIVET	4
4	APSRB	STRAIN RELIEF CAP	1	10	APF-09	WHEEL FAN - Metal	1
5	APC-15-E	POWER CORD	1	11	APGA100I	INTAKE GRILL	2
6	APNH	NUT	1	12	APH100RM	NUT	1

Troubleshooting Guide

Caution! Unplug power cord before servicing machine component.

Problem	Possible Cause	Remedy
Unit will not turn on	Not plugged in	Plug unit into proper outlet
	Switch is worn	Replace switch
	Tripped circuit breaker	Reset breaker
	Short in power cord	Replace power cord or replace cord end
	Capacitor on motor is damaged	Replace motor
Air mover runs or starts slowly	Switch is worn	Replace switch
	Capacitor on motor is worn or damaged	Replace motor
Air mover runs or starts slowly	Capacitor terminal may be shorting	Replace motor
The fan is rubbing	Fan is off-center	Replace fan
Air mover is making strange noises	There is a foreign object stuck near fan	Turn off motor and unplug unit, then remove foreign object
	Motor bearing is worn	Replace motor
	Fan is rubbing	Replace fan

Warranty

Minuteman International Made Simple Commercial Limited Warranty

REVISION O EFFECTIVE 4/1/2016

Minuteman International, Inc. warrants to the original purchaser/user that the product is free from defects in workmanship and materials under normal use. Minuteman will, at its option, repair or replace without charge, parts that fail under normal use and service when operated and maintained in accordance with the applicable operation and instruction manuals. All warranty claims must be submitted through and approved by factory authorized repair stations.

This warranty does not apply to normal wear, or to items whose life is dependent on their use and care, such as belts, cords, switches, hoses, rubber parts, electrical motor components or adjustments. Parts manufactured by Minuteman are covered by and subject to the warranties and/or guarantees of their manufacturers. Please contact Minuteman for procedures in warranty claims against these manufacturers.

Special warning to purchaser -- Use of replacement filters and/or pre-filters not manufactured by Minuteman or its designated licensees, will void all warranties expressed or implied. A potential health hazard exists without original equipment replacement.

All warranted items become the sole property of Minuteman or its original manufacturer, whichever the case may be.

Minuteman disclaims any implied warranty, including the warranty of merchantability and the warranty of fitness for a particular purpose. Minuteman assumes no responsibility for any special, incidental or consequential damages.

This limited warranty is applicable only in the U.S.A. and Canada, and is extended only to the original user/purchaser of this product. Customers outside the U.S.A. and Canada should contact their local distributor for export warranty policies. Minuteman is not responsible for costs or repairs performed by persons other than those specifically authorized by Minuteman. This warranty does not apply to damage from transportation, alterations by unauthorized persons, misuse or abuse of the equipment, use of non-compatible chemicals, or damage to property, or loss of income due to malfunctions of the product.

If a difficulty develops with this machine, you should contact the dealer from whom it was purchased.

This warranty gives you specific legal rights, and you may have other rights which vary from state to state. Some states do not allow the exclusion or limitation of special, incidental or consequential damages, or limitations on how long an implied warranty lasts, so the above exclusions and limitations may not apply to you.

Warranty

Model	Parts	Labor	Poly	Travel**
Cord Electric Group	5yrs	3yrs	12yrs	90 days
Battery Operated Group	5yrs	3yrs	12yrs	90 days

Exceptions.....

Model	Parts	Labor	Poly	Travel**
Port A Scrub, all models	1yr	6months	12yrs	90 days
A3S Blower	1yr	1yr	0	0
Phenom Dual Motor Upright Vacuums	2yrs	2yrs	0	0
Explosion Proof Vacuum	1yr	1yr	0	0
Propane Burnisher	1yr	1yr	0	90 days
**Travel, 2 hours max				

<i>Stand-alone Battery Chargers:</i>	One year
<i>Replacement Parts:</i>	Ninety days
<i>Batteries:</i>	0-3 months full replacement, 4-12 months pro-rate
<i>Polypropylene Plastic Tanks:</i>	12yr warranty, no additional labor

Minuteman[®]



Excellence Meets Clean

Minuteman International, Inc. · 14N845 U.S. Route 20 · Pingree Grove, Illinois 60140 USA

Phone 800-323-9420

www.minutemanintl.com

A Member of the Hako Group